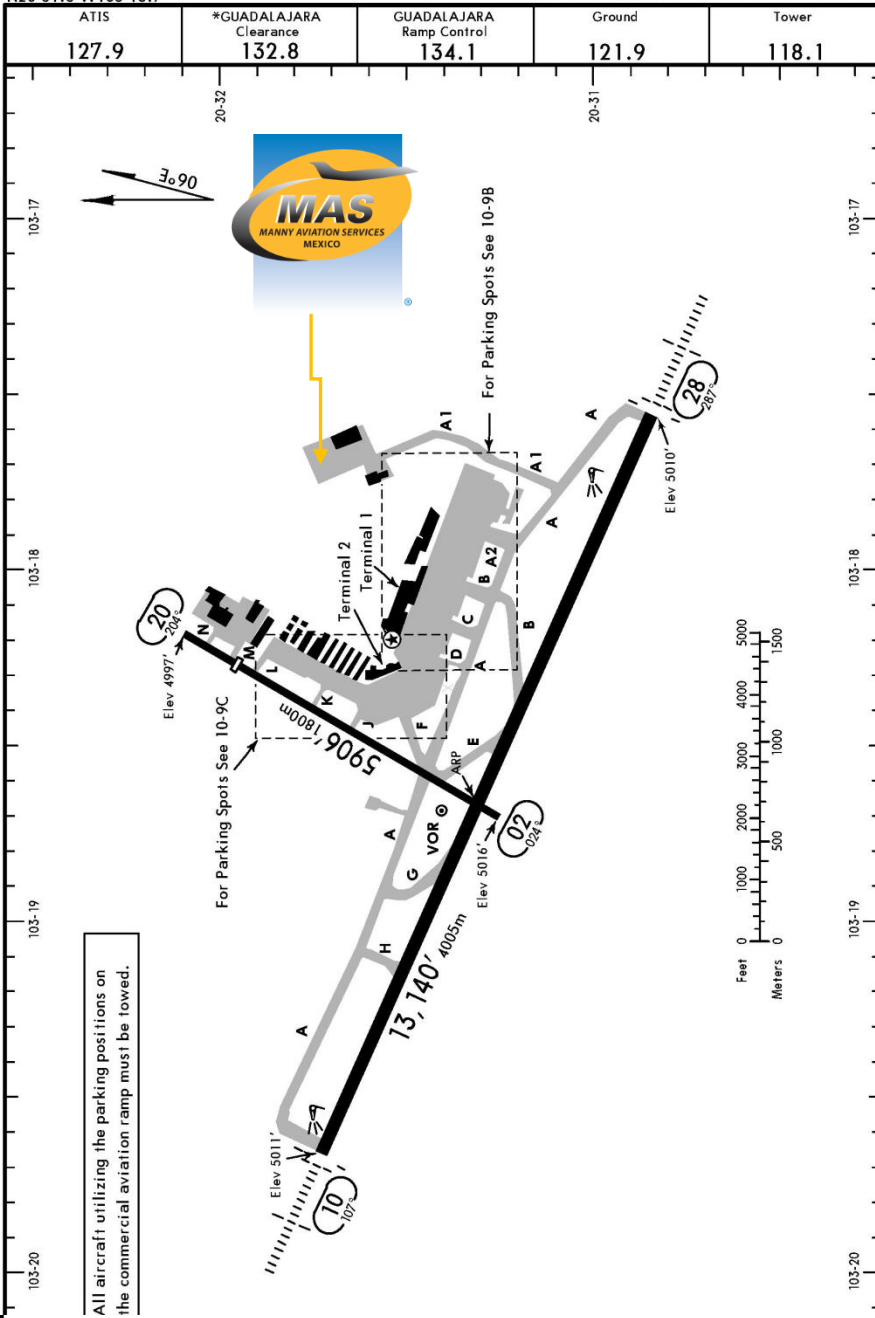




MMGL / GDL
MIGUEL HIDALGO Y COSTILLA INTERNATIONAL

MMGL/GDL
Apt Elev 5016'
N20 31.3 W103 18.7

JEPPESEN GUADALAJARA, MEXICO
9 MAR 18 (10-9) MIGUEL HIDALGO Y COSTILLA INTL



Address:

Km. 17.5 Carretera Guadalajara a Chapala
Tlajomulco de Zúñiga, Jal.
Telephone. +52(722) 273 0981

Operational information:

Operational hours: 24 hrs.
Customs and immigration: 24 hrs.
Fuel available: Avgas 100/130, Jet A1
Fire Cat: VII

Bear in mind Aerotron FBO is the only authorized FBO at MMGL to attend executive aviation; the operational hours are from 07:00 local time until 22:00 local time. For overtime coordination, please advise before 18:00 lt. This service has an extra charge.

TAKE-OFF						
Rwy 10		Rwy 28		Rwys 02, 20		
SCHEDULED AIR CARRIER ONLY		Other		DAY	NIGHT	
If Weather Below Landing Minimums, Take-off Alternate Airport Required.						
Pilot is required to report existing visibility of at least 7 HIRLS and RCL along the rwy in the take-off direction. If differences exist between reported visibility and Pilot visibility, the Pilot's report will be given preference.						
2 Eng	1/4	1 & 2 Eng	600-1	800-1	VFR	NA
3 & 4 Eng		3 & 4 Eng	1/2	800-1/2	NOT APPLICABLE	



MMGL / GDL
MIGUEL HIDALGO Y COSTILLA INTERNATIONAL

Arrivals

1. Upon arrival aircraft must follow ATC instructions to taxi into Aerotron FBO.
2. Inside the FBO will be customs, immigration authorities and Federal Police.

Departures

1. For departure the passenger and crew will arrive into the FBO and they will complete customs and immigration procedures inside the FBO.
2. After this process, the passenger will be cleared to board the aircraft.

