



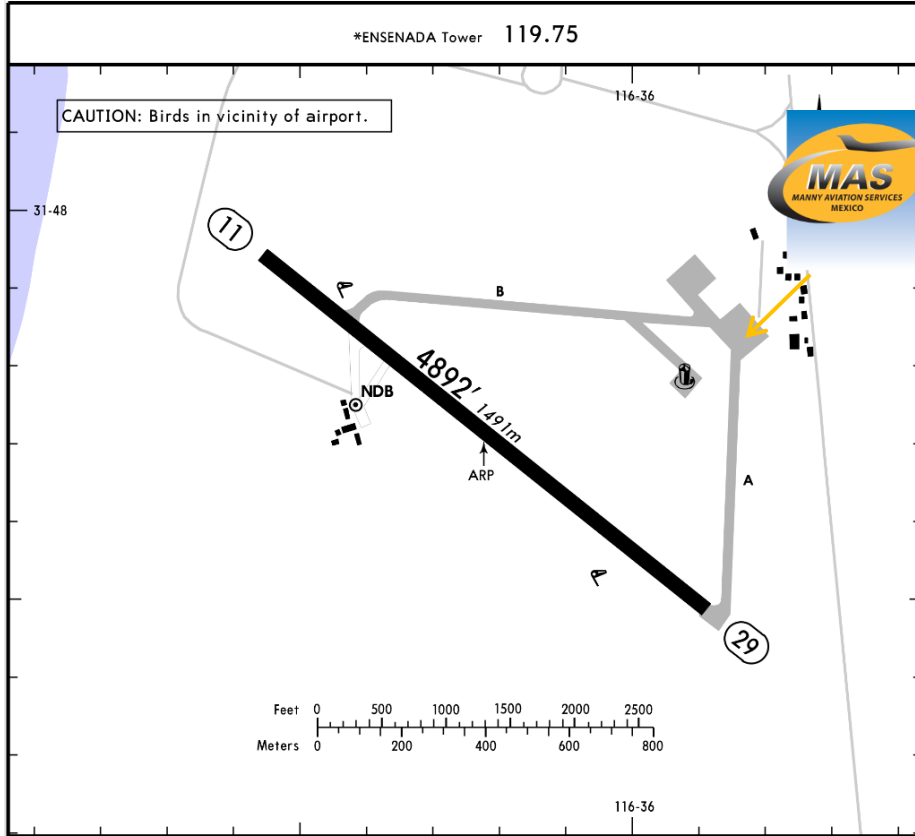
MMES/ESE
RAL. ALBERTO SALINAS CARRANZA INTERNATIONAL AIRPORT.

MMES/ESE
Apt Elev 66'
N31 47.7 W116 36.2



ENSENADA, MEXICO

12 JUN 09 (16-1) GEN DIV P A A.L. SALINAS CARRANZA



Address:

Autopista Transpeninsula, Col. El Cipres, Ensenada, Baja California Norte
C.P. 22780
Telephone: +52 (722) 273 0981

Operational information:

Operational hours: 1600-0100UTC
Customs and immigration: Only on airport operational hours.
Fuel available: Avgas 100/130, Jet A1.
Fire Cat: VI

ADDITIONAL RUNWAY INFORMATION

RWY	USABLE LENGTHS	LANDING BEYOND		TAKE-OFF	WIDTH
		Threshold	Glide Slope		
11 29					115' 35m

TAKE-OFF

	Rwy 29		Rwy 11	
	DAY	NIGHT	DAY	NIGHT
1 & 2 Eng	200-1	NA	VFR	NA
3 & 4 Eng	200-3/4			



Arrivals

1. Upon arrival the Crew must follow ATC's instructions to taxi into General Aviation Apron.
2. Crew and passengers' passports will be given to one of our agents.
3. Passengers will descend and walk into the General Aviation Terminal to follow Immigration and Customs' procedures; all bags, backpacks, handbags, briefcases, etc., must be taken inside the terminal to be checked by Customs Authorities, passengers must be with their luggage all the time.

4. The whole procedure will take around 20-30 minutes; this will depend on how many passengers arrive.

Departures

1. Our agents will take Crew and passenger's passports among their luggage.
2. Passengers and Crew will go thru Immigration and Customs and then they will board the aircraft.
3. The whole procedure will take around 20-30 minutes; this will depend on how many passengers arrive and also on how many aircrafts be at the position at the time.

