

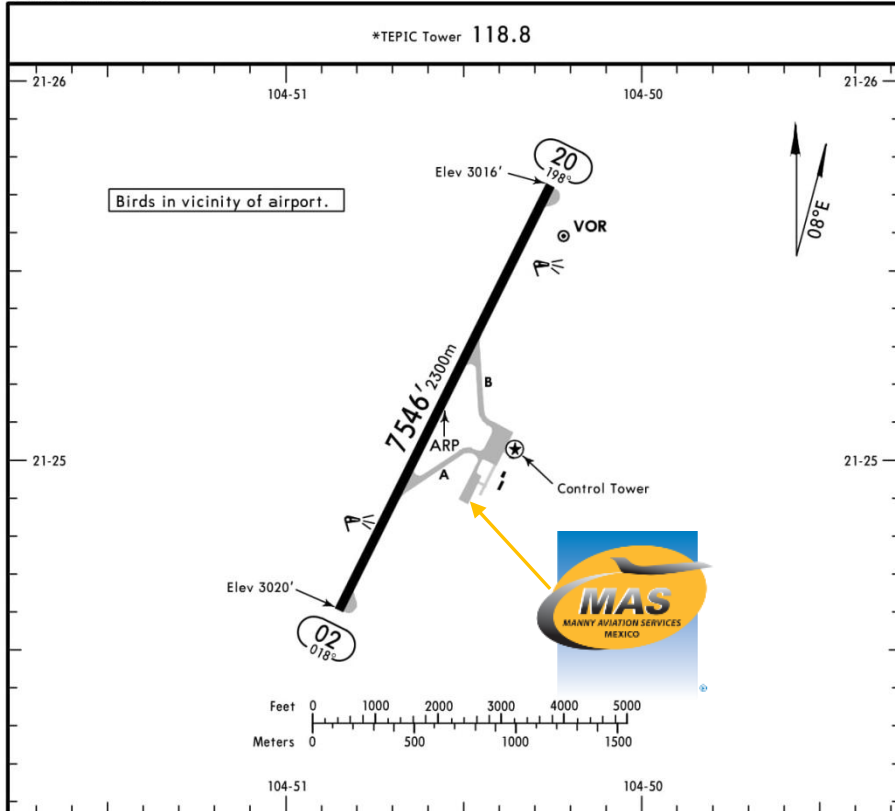


MMEP/TPQ
AMADO NERVO NATIONAL AIRPORT

MMEP/TPQ
Apt Elev 3020'
N21 25.2 W104 50.6

JEPPESEN
16 JUN 17 (13-1) Eff 22 Jun

TEPIC, MEXICO
TEPIC



Address:

Domicilio conocido, Pantanal,
Municipio de Jalisco. Nayarit
Apartado Postal 195
Telephone: +52 (722) 273 0981

Operational information:

Operational hours: Winter 1300-0100
UTC / Summer 1200-0000 UTC
Customs and Immigration: NON
AVAILABLE
Fuel available: Avgas 100/130, Jet A1.
Fire Cat: VI

ADDITIONAL RUNWAY INFORMATION

RWY		USABLE LENGTHS			WIDTH
		Threshold	Glide Slope	TAKE-OFF	
02 20	MIRL REIL PAPI-L (angle 3.0°)				148' 45m

TAKE-OFF & DEPARTURE PROCEDURE

	Rwy 02	Rwy 20
1 & 2 Eng	500-1	700-2
3 & 4 Eng		

For departure procedures and MCAs see
Tepic Departures 10-3 and 10-3A.

CHANGES: Rwy 20 elevation.

© JEPPESEN, 2003, 2017. ALL RIGHTS RESERVED.



MMEP/TPQ
AMADO NERVO NATIONAL AIRPORT

Arrivals

1. Upon arrival Crew must follow ATC's instructions to taxi into General Aviation Apron.
2. When passengers descend from AC, one representative of Federal Police will check AC and passengers' luggage.
3. Passengers will descend and walk into General Aviation Terminal to take their ground transportation.

Departures

1. Crew and passengers arrive to General Aviation Terminal.
2. Our Agent will be waiting for Crew and passengers, help them with baggage and coordinate all services for departure.

