

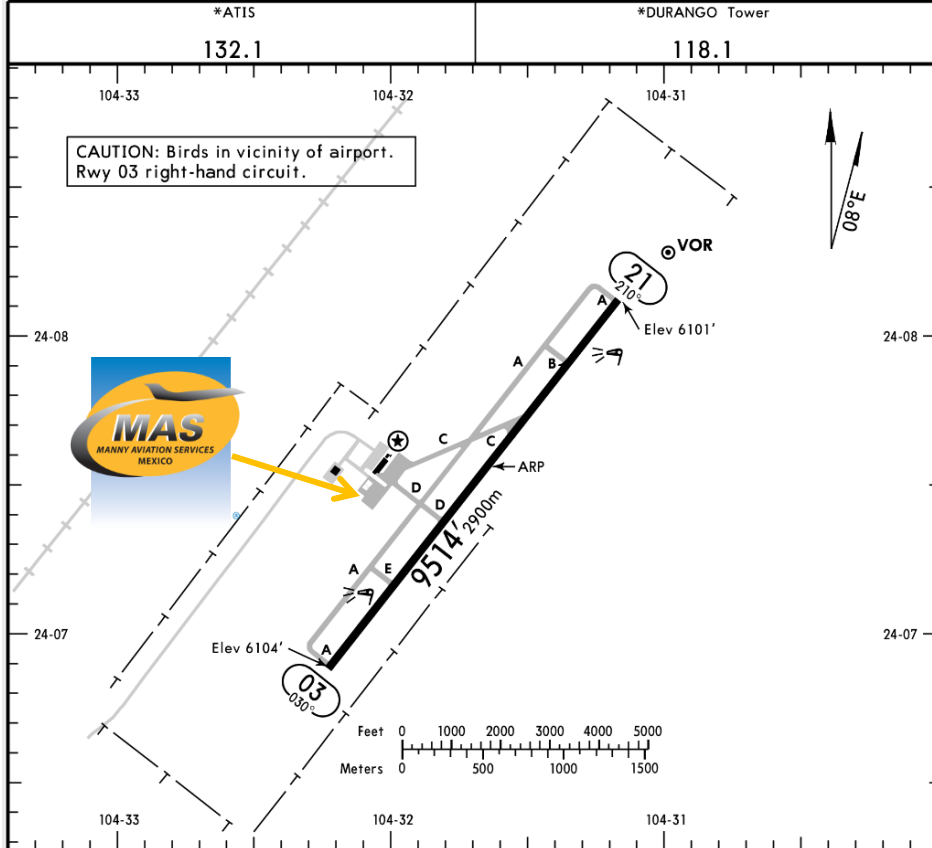


MMDO/DGO  
DURANGO INTERNATIONAL AIRPORT.

MMDO/DGO  
Apt Elev 6104'  
N24 07.6 W104 31.6

JEPPESEN  
22 APR 16 (10-9) Eff 28 Apr

DURANGO, MEXICO  
DURANGO INTL



**Address:**

Autopista Durango – Gómez Palacio,  
Km 15.5, Durango, Durango  
Telephone: +52 (722) 273 0981

**Operational information:**

Operational hours: Winter 1200-0200  
UTC / Summer 1100-0100 UTC  
Customs and immigration: Only on  
airport operational hours.  
Fuel available: Avgas 100/130, Jet A1.  
Fire Cat: VI

ADDITIONAL RUNWAY INFORMATION

RWY	USABLE LENGTHS	LANDING BEYOND		TAKE-OFF	WIDTH
		Threshold	Glide Slope		
03 21	HIRL REIL PAPI-L (angle 3.0°)				148' 45m

	TAKE-OFF	FOR FILING AS ALTERNATE	
	All Rwys	A	B
1 & 2 Eng	400-1	800-2	C
3 & 4 Eng	300-1/2		



MMDO/DGO  
DURANGO INTERNATIONAL AIRPORT.

**Arrivals**

1. Upon arrival the Crew must follow ATC's instructions to taxi into General Aviation Apron.
2. Crew and passengers' passports will be given to one of our agents.
3. Passengers will descend and walk into the General Aviation Terminal to follow Immigration and Customs' procedures; all bags, backpacks, handbags, briefcases, etc., must be taken inside the terminal to be checked by Customs Authorities, passengers must be with their luggage all the time.

4. The whole procedure will take around 20-30 minutes; this will depend on how many passengers arrive.

**Departures**

1. Our agents will take Crew and passenger's passports among their luggage.
2. Passengers and Crew will go thru Immigration and Customs and then they will board the aircraft.
3. The whole procedure will take around 20-30 minutes; this will depend on how many passengers arrive and also on how many aircrafts be at the position at the time.

