



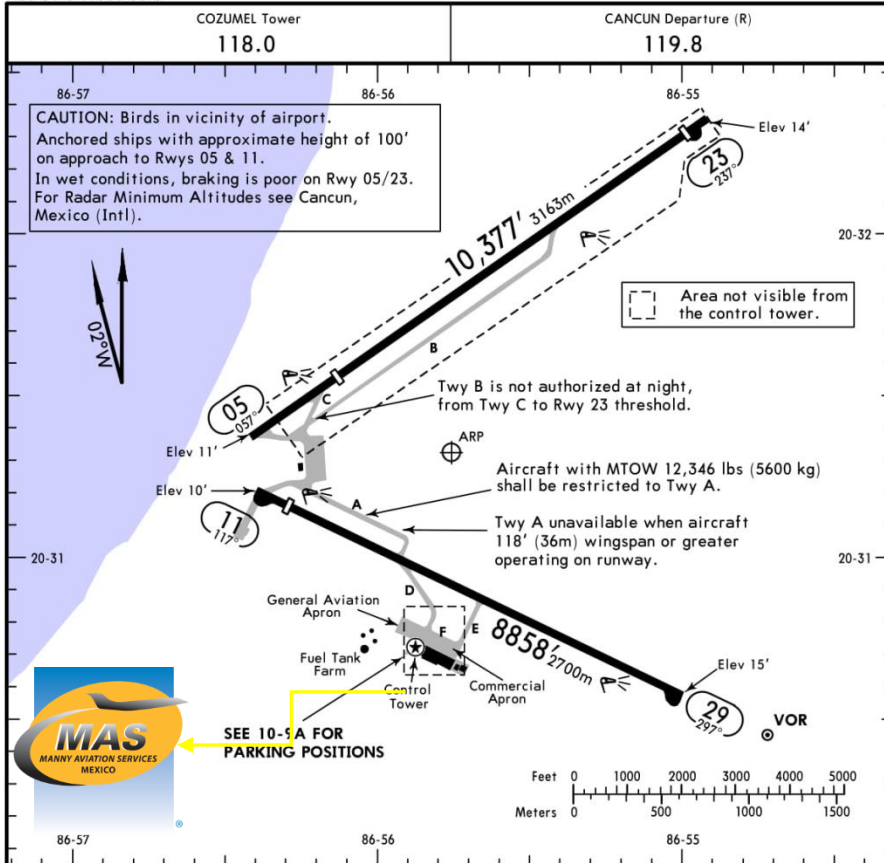
MMCZ/CZM  
COZUMEL INTERNATIONAL AIRPORT

MMCZ/CZM

Apt Elev 15'  
N20 31.3 W086 55.8

JEPPESEN  
23 MAR 18 (10-9) Eff 29 Mar

COZUMEL, MEXICO  
COZUMEL INTL



**Address:**

Boulevard Miguel Aleman S/N  
Aeropuerto Internacional S/N  
Cozumel, Quintana Roo  
C.P.77600  
Telephone. +52(722) 273 0981

**Operational information:**

Operational hours: 24 hrs.  
Customs and immigration: 24 hrs.  
Fuel available: Avgas 100/130, Jet A1  
Fire Cat: VII

RWY		USABLE LENGTHS		TAKE-OFF	WIDTH
		Threshold	Glide Slope		
05 23	PAPI-L (angle 3.0°)	7917' 2413m		9885' 3013m	148'
				7917' 2413m	45m
11 29	HIRL REIL PAPI-L (angle 3.0°)	8202' 2500m			148'
				8202' 2500m	45m

① Military Operations only.

TAKE-OFF				FOR FILING AS ALTERNATE	
Rwy 05/23		Rwy 11/29			
1 & 2 Eng	DAY	NIGHT	200-1/2	A	800-2
3 & 4 Eng	VFR	NOT APPLICABLE			
				C	
				D	

CHANGES: Declared distances, notes.

© JEPPESEN, 2001, 2018. ALL RIGHTS RESERVED.



MMCZ/CZM  
COZUMEL INTERNATIONAL AIRPORT

### Arrivals

1. Aircraft coming from Bahamas, Central and South America will follow ATC instructions to be parked on commercial ramp.
2. If you overnight the AC will be parked at general aviation apron where customs clearance procedure will be performed.
3. Flights coming from North America, Asia, Europe and Africa will be parked at general aviation apron.
4. SEDENA staff will inspect the aircraft, suitcases and luggage. Bear in mind that a Dog is used for such procedure.
5. Once SEDENA finishes the inspection, crew and passengers are allowed to continue to the terminal building to clear customs.

### Departures

1. If the intention is a quick stop to clear customs or refuel, the AC will be parked at the same position that was assigned by ATC all the time.
2. Once the flight plan has been filed, this will be coordinated with ATC. Remember to request a prior clearance to Cozumel tower frequency 118.0.
3. For departure there is no revision performed by SEDENA, only the normal procedure for customs departure.
4. The luggage will be placed inside the AC, and you will be given ground support.

