

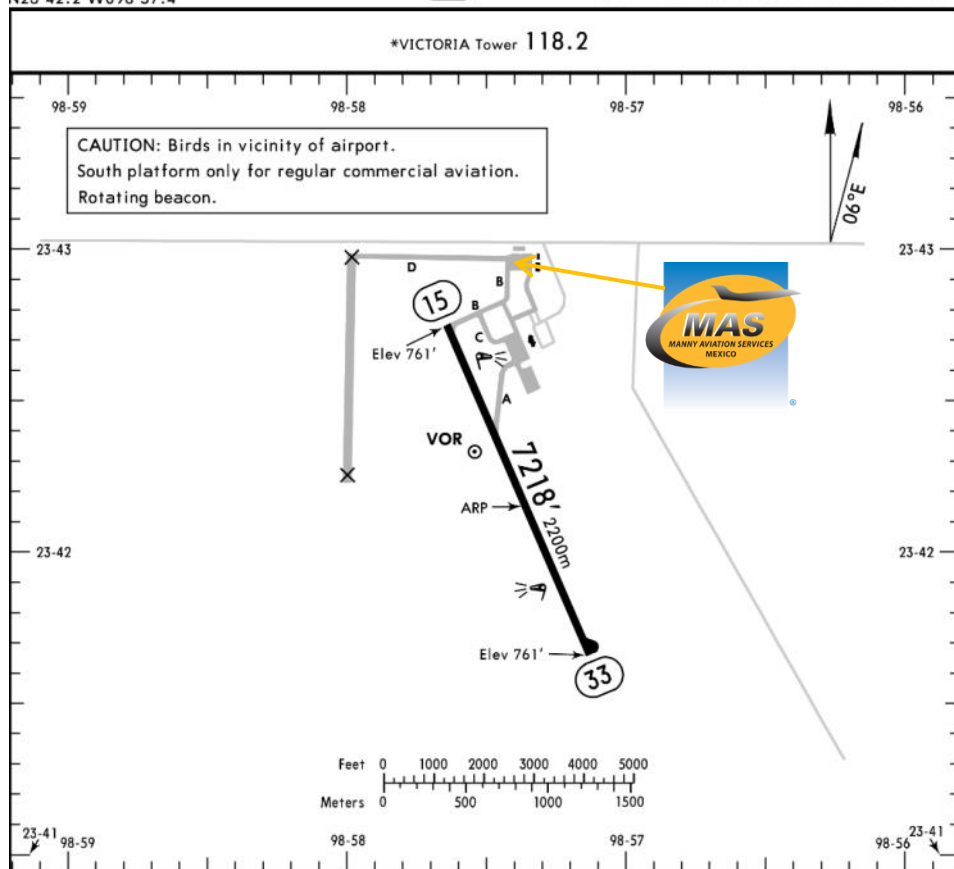


MMCV / CVM  
 GRAL. PEDRO JOSÉ MÉNDEZ INTERNACIONAL AIRPORT

**MMCV/CVM**  
 Apt Elev **761'**  
 N23 42.2 W098 57.4

**JEPPESEN CIUDAD VICTORIA, MEXICO**  
 18 DEC 15 (13-1) GEN PEDRO JOSE MENDEZ INTL

**Address:**  
 KM 18.5 Carretera a Soto la Marina,  
 Municipio de Gomez, Ciudad Victoria,  
 Tamaulipas. C.P. 87230  
 Telephone. +52 (722) 273 0981



**Operational information:**  
 Operational hours: 1300/0100 UTC  
 Customs and immigration: During operational hours.  
 Fuel available: Avgas 100/130, Jet A1  
 Fire Cat: VI

**ADDITIONAL RUNWAY INFORMATION**

RWY	USABLE LENGTHS	LANDING BEYOND	TAKE-OFF	WIDTH
15 33	HIRL ① PAPI-L (angle 3.0°)			148' 45m

① On request in IFR conditions.

**TAKE-OFF & DEPARTURE PROCEDURE**

**FOR FILING AS ALTERNATE**

	<b>Rwys 15, 33</b>	
1 & 2 Eng	300-1	A B
3 & 4 Eng	300-1/2	C D

For departure procedures and MCA's see Ciudad Victoria SIDs.



### Arrivals

1. Upon arrival the Crew must follow ATC's instructions to taxi into General Aviation Apron.
2. Passengers will descend and walk into the General Aviation Terminal to follow Immigration and Customs' procedures; all bags, backpacks, handbags, briefcases, etc., must be taken inside the terminal to be checked by Customs Authorities, passengers must be with their luggage all the time.
3. When passengers descend the aircraft, one representative of Customs, Federal Police and

Agricultural Authorities will board the aircraft to verify that any passengers, nor luggage, remain on board. Please remember that no food can enter Mexican territory.

### Departures

1. Our agents will take Crew and passenger's passports among their luggage.
2. The luggage will be taken into the x ray machine for security purposes.
3. The whole process will take around 15-20 minutes.

