



MMCU/CUU
 AL DIV. P.A. ROBERTO FIERRO VILLALOBOS INTERNATIONAL AIRPORT.

MMCU/CUU

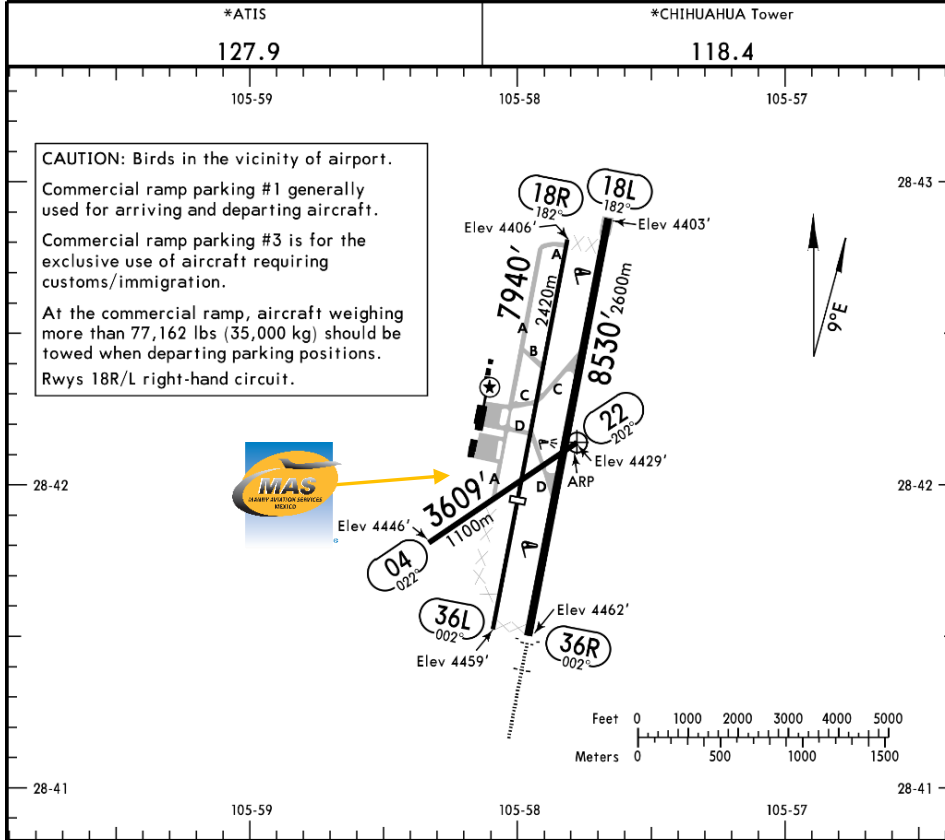
Apt Elev **4462'**
 N28 42.1 W105 57.8



22 APR 16 (10-9) Eff 28 Apr

CHIHUAHUA, MEXICO

GEN DIV P'A ROBERTO FIERRO VILLALOBOS INTL



Address:

Boulevard Juan Pablo II, Km 14,
 Chihuahua, Chihuahua, C.P. 31390
 Telephone:+52 (722) 273 0981

Operational information:

Operational hours: Winter 1400-0400
 UTC / Summer 1300-0300 UTC
 Customs and immigration: Only on
 airport operational hours.
 Fuel available: Avgas 100/130 Jet A1
 Fire Cat: VI

RWY	USABLE LENGTHS		TAKE-OFF	WIDTH
	Threshold	Landing Beyond Glide Slope		
04 ① 22				98' 30m
18L 36R	HIRL REIL PAPI-L (angle 3.0°)		7405' 2257m	148' 45m
18R ② 36L	HIRL ALSF-1 REIL PAPI-L (angle 3.0°)		5315' 1620m	75' 23m

- ① Maximum weight of 33,069 lbs (15,000 kg).
- ② VFR operations only. Weight bearing capacity of 33,069 lbs (15,000 kg).

	TAKE-OFF			FOR FILING AS ALTERNATE	
	Rwy 36R Authorized Only When CUU VOR Operating	Rwy 18L	Rwy 18R/36L, Rwy 04/22	Precision	Non-Precision
1 & 2 Eng	500-1	1200-3	VFR	A	1400-3
3 & 4 Eng				B	
	C				
	D				



Arrivals

1. Upon arrival the Crew must follow ATC's instructions to taxi into General Aviation Apron.
2. Crew and passengers' passports will be given to one of our agents.
3. When passengers descend the aircraft, one representative of Customs, Federal Police and Agricultural Authorities will board the aircraft to verify that any passengers, nor luggage, remain on board. Please remember that no food can enter Mexican territory.
4. Passengers will descend and walk into the General Aviation Terminal to follow Immigration and Customs' procedures; all bags, backpacks, handbags,

briefcases, etc., must be taken inside the terminal to be checked by Customs Authorities, passengers must be with their luggage all the time. Passports will be taken to the Immigration Office to complete the arrival process.

5. The whole process will take around 15-20 minutes.

Departures

1. Our agents will take Crew and passenger's passports among their luggage.
2. Luggage will be taken into the x ray machine for security purposes.
3. The whole process will take around 15-20 minutes.

