



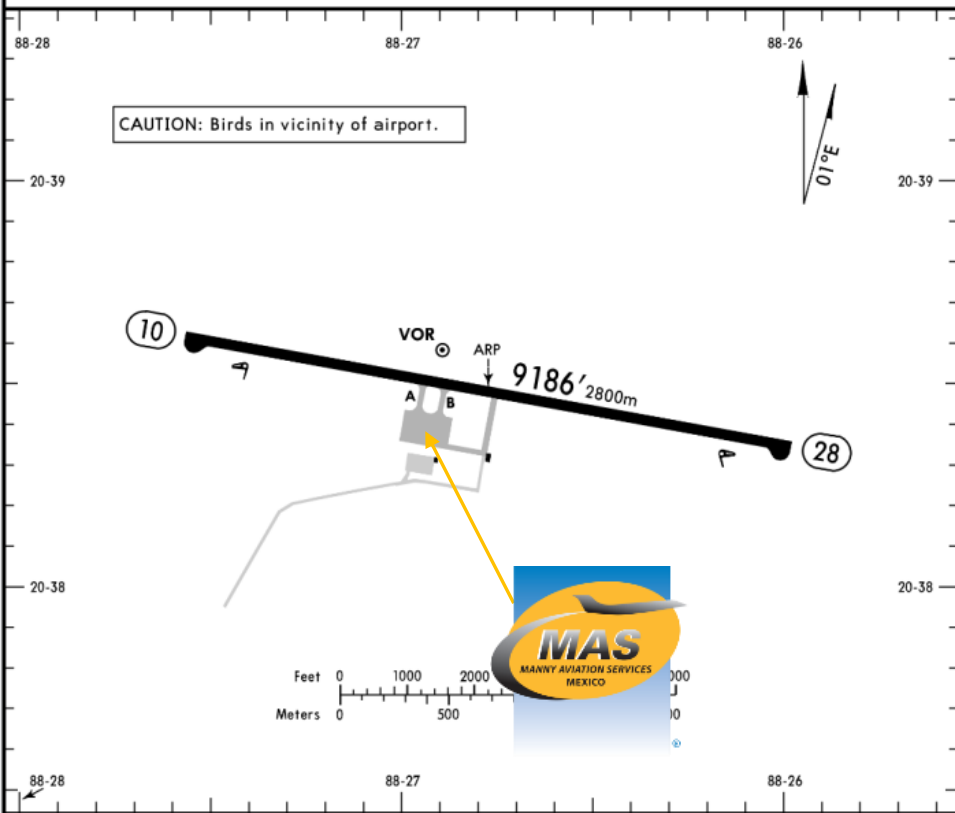
MMCT / CZA
CHICHEN-ITZA INTERNATIONAL AIRPORT

MMCT/CZA
Apt Elev 102'
N20 38.5 W088 26.8

JEPPESEN
17 JUL 15 (13-1)

CHICHEN-ITZA, MEXICO
CHICHEN-ITZA INTL

*CHICHEN-ITZA Tower 118.9



Address:

Carretera Federal, Cancún-Mérida
S/N, km. 131.2 de Kaua.
Telephone: +52 (722) 273 0981

Operational information:

Operational hours: Winter 1400-2200
UTC / Summer 1300-2100 UTC
Customs and Immigration: During the
hours of operation of the airport by
previous request
Fuel: NO FUEL AVAILABLE
Fire Cat: IV

ADDITIONAL RUNWAY INFORMATION

RWY	USABLE LENGTHS	LANDING BEYOND	TAKE-OFF	WIDTH
10 28	HIRL PAPI-L (angle 3.0°)			148' 45m

	TAKE-OFF
	All Rwys
1 & 2 Eng	1
3 & 4 Eng	1/2



Arrivals

1. Upon arrival Crew must follow ATC's instructions to taxi into General Aviation Apron.
2. Crew and passengers' passports will be given to one of our agents.
3. When passengers descend the aircraft, one representative of Customs, Federal Police and Agricultural Authorities will board the aircraft to verify that any passengers, nor luggage, remain on board. Please remember that no food can enter Mexican territory.
4. Passengers will descend and walk into the General Aviation Terminal to follow Immigration and Customs'

- procedures; all bags, backpacks, handbags, briefcases, etc., must be taken inside the terminal to be checked by Customs Authorities, passengers must be with their luggage all the time. Passports will be taken to the Immigration Office to complete the arrival process.
5. The whole process will take around 15-20 minutes.

Departures

1. Our agents will take Crew and passengers' passports among their luggage.
2. Luggage will be taken into the x ray machine for security purposes.
3. The whole process will take around 15-20 minutes.

