

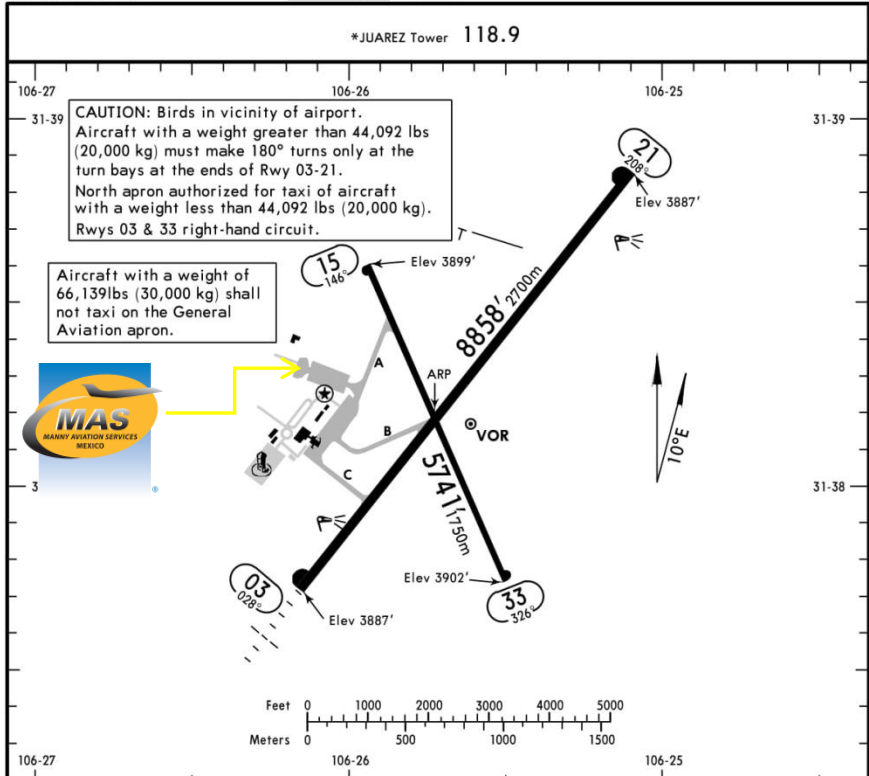


MMCS/CJS
ABRAHAM GONZALEZ INTERNATIONAL AIRPORT

MMCS/CJS
Apt Elev 3904'
N31 38.2 W106 25.7

24 FEB 17
Eff 2 Mar (13-1)

JEPPESEN CIUDAD JUAREZ, MEXICO
ABRAHAM GONZALEZ INTL



ADDITIONAL RUNWAY INFORMATION

RWY		USABLE LENGTHS			WIDTH
		Threshold	Landing Beyond Glide Slope	TAKE-OFF	
03	HIRL REIL SALSF PAPI-L (angle 3.0°)				148' 45m
21	HIRL REIL PAPI-L (angle 3.0°)				
15					98' 30m
33					

TAKE-OFF & DEPARTURE PROCEDURE

FOR FILING AS ALTERNATE

	Rwys 03, 21		Rwys 15, 33		A B C D
	DAY		DAY		
1 & 2 Eng	700-1		VFR		1000-2
3 & 4 Eng	500-1				

DEPARTURE PROCEDURE: For departures and MCAs see Ciudad Juarez 10-3 and 10-3A.

Address:

Carretera Panamericana Km. 18.5
Col. Zona Federal
Ciudad Juarez, Chih.
Telephone: +52 (722) 273 0981

Operational information:

Operational hours: Winter 1400-0400 UTC / Summer 1300-0300 UTC
Customs and immigration: Only on airport operational hours.
Fuel available: Avgas 100/130 Jet A1
Fire Cat: VI

CHANGES: Runway 14/32 renumbered to 15/33.

© JEPPESEN, 1999, 2017. ALL RIGHTS RESERVED.



MMCS/CJS
ABRAHAM GONZALEZ INTERNATIONAL AIRPORT

Arrivals

1. Upon arrival aircraft must follow ATC instructions to taxi into to the general aviation apron.
2. Crew and passengers passports will be given to one of our agents.
3. Passengers will disembark and walk into the General Aviation terminal to follow customs and immigration procedures; all bags, backpacks, handbags, briefcases must be taken inside the terminal to be subject to a review process by the customs and federal police authorities, the passengers must be with their luggage all the time.

4. The whole procedure will take around 20-30 minutes; this will depend on how many passengers arrive.

Departures

1. Our agents will take the crew and passenger passports among with the luggage.
2. The passengers and crew will pass for immigration and customs. And then they will board the aircraft.
3. The whole procedure will take around 20-30 minutes; this will depends on how many passengers arrive and also on how many aircrafts be at the position at the time.

