



MMCP/CPE  
ING. ALBERTO ACUÑA ONGAY INTERNATIONAL AIRPORT

**MMCP/CPE**

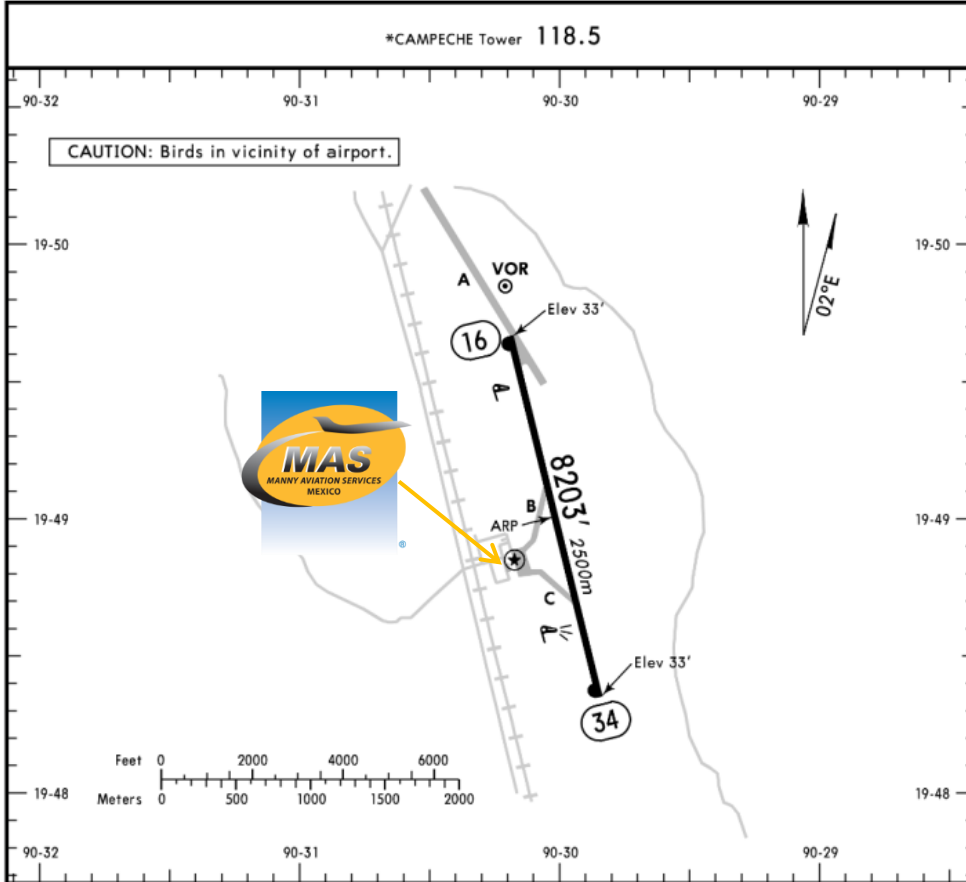
Apt Elev 33'  
N19 49.0 W090 30.0



16 OCT 09  
Eff 22 Oct (13-1)

**CAMPECHE, MEXICO**

ALBERTO ACUNA ONGAY INTL



**Address:**

Avenida Lopez Portillo s/n, Carretera Campeche-China, Apartado Postal 10 Campeche, Campeche.C.P. 24072 Telephone.+52 (722) 273 0981

**Operational information:**

Operational hours: Winter 1300-0100 UTC / Summer 1200-0000 UTC  
Customs and immigration: During the hours of operation of the airport.  
Fuel available: Avgas 100/130, Jet A1 CAT VI

ADDITIONAL RUNWAY INFORMATION

RWY	USABLE LENGTHS	LANDING BEYOND		TAKE-OFF	WIDTH
		Threshold	Glide Slope		
16 ① 34	HIRL PAPI-L (angle 3.0°)				148' 45m

① Uneven Rwy surface.

TAKE-OFF		FOR FILING AS ALTERNATE	
All Rwys			
1 & 2 Eng	500-1	A	800-2
		B	
3 & 4 Eng	300-1	C	
		D	



### Arrivals

1. Upon arrival the Crew must follow ATC's instructions to taxi into General Aviation Apron.
2. Crew and passengers' passports will be given to one of our agents.
3. When passengers descend the aircraft, one representative of Customs, Federal Police and Agricultural Authorities will board the aircraft to verify that any passengers, nor luggage, remain on board. Please remember that no food can enter Mexican territory.
4. Passengers will descend and walk into the General Aviation Terminal to follow Immigration and Customs'

procedures; all bags, backpacks, handbags, briefcases, etc., must be taken inside the terminal to be checked by Customs Authorities, passengers must be with their luggage all the time. Passports will be taken to the Immigration Office to complete the arrival process.

5. The whole process will take around 15-20 minutes.

### Departures

1. Our agents will take Crew and passenger's passports among their luggage.
2. Luggage will be taken into the x ray machine for security purposes.
3. The whole process will take around 15-20 minutes.

