



MMCN / CEN
CIUDAD OBREGON INTERNACIONAL AIRPORT

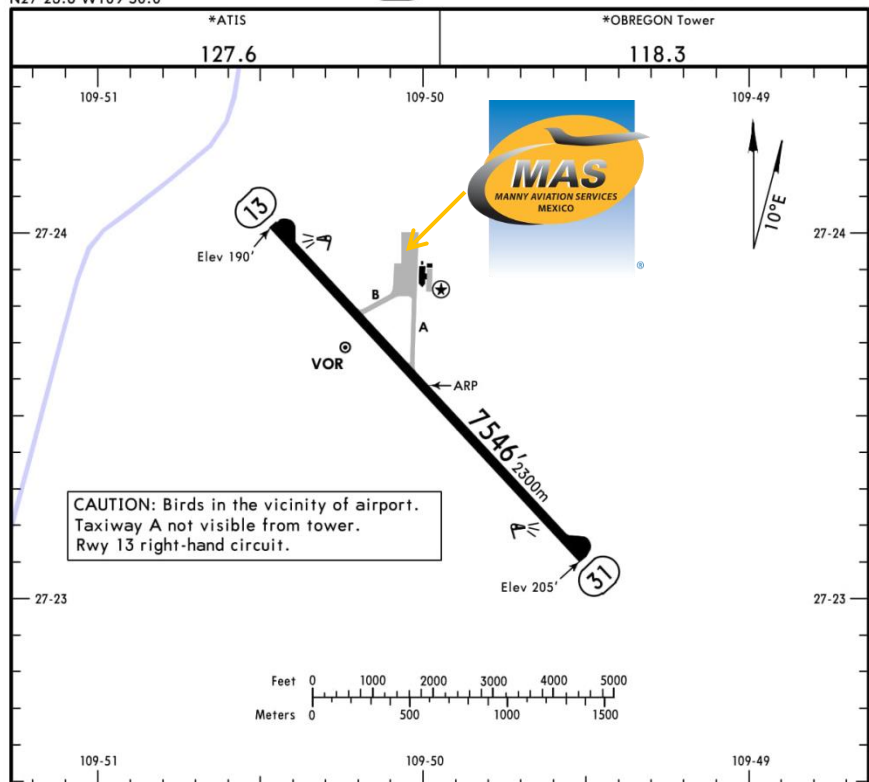
Address:

KM 1840 Carretera Internacional
Municipio de Cajeme Ciudad Obregon,
Sonora
C.P. 85000
Telephone+52 (722) 273 0981

Operational information:

Operational hours: 1300/0100 UTC
Customs and immigration: During
operational hours.
Fuel available: Avgas 100/130, Jet A1
Fire Cat: VI

MMCN/CEN **JEPPESEN** CIUDAD OBREGON, MEXICO
Apt Elev 205' 16 JUN 17 (13-1) Eff 22 Jun CIUDAD OBREGON INTL
N27 23.6 W109 50.0



ADDITIONAL RUNWAY INFORMATION

RWY	LANDING BEYOND	USABLE LENGTHS	TAKE-OFF	WIDTH
13 31	HIRL PAPI-L (angle 3.0°)			148' 45m

TAKE-OFF		FOR FILING AS ALTERNATE	
All Rwys			
1 & 2 Eng	400-1	A	800-2
		B	
3 & 4 Eng	300-1/2	C	
		D	

For departure procedures and MCA's see
Ciudad Obregon Departures 10-3 and 10-3A.

CHANGES: Runway 13 end elevation. © JEPPESEN, 2002, 2017. ALL RIGHTS RESERVED.



MMCN / CEN
CIUDAD OBREGON INTERNACIONAL AIRPORT

Arrivals

1. Upon arrival aircraft must follow ATC instructions to taxi into general aviation apron.
2. Passengers will disembark and walk into the main terminal to follow customs and immigration procedures; all bags, backpacks, handbags, briefcases must be taken inside the terminal to be subject to a review process by the customs and federal police authorities, the passengers must be with their luggage all the time.
3. When the passengers disembark the aircraft, one representative of customs, federal police and

agricultural authorities will embark the aircraft to check if there is no one of the passengers left or any luggage and food that cannot be introduced into Mexican territory.

Departures

1. Our agents will take the crew and passenger passports among with the luggage.
2. The luggage will be taken into the x ray machine for security purposes.
3. The whole process will take around 15-20 minutes.

