



MMCM / CTM
CHETUMAL INTERNACIONAL AIRPORT

MMCM/CTM

Apt Elev 39'
N18 30.3 W088 19.6



15 JAN 16

13-1

CHETUMAL, MEXICO

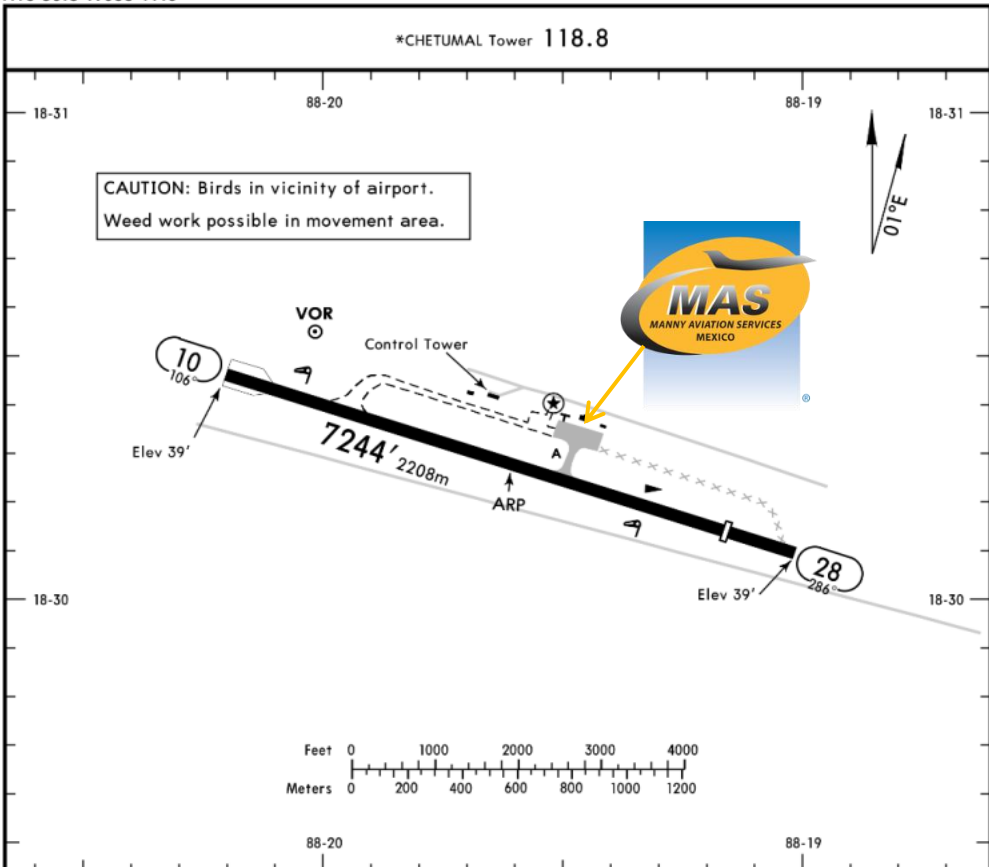
CHETUMAL INTL

Address:

Prolongacion Av. Revolucion 660,
Col. Industrial Chetumal,
Quintana Roo
Telephone +52 (722) 273 0981

Operational information:

Operational hours: 1200 / 2400 UTC
Customs and immigration: During
operational hours.
Fuel available: Avgas 100/130, Jet A1
Fire Cat: V



ADDITIONAL RUNWAY INFORMATION

RWY	HIRL PAPI-L (angle 3.0°)	USABLE LENGTHS		TAKE-OFF	WIDTH
		Threshold	Glide Slope		
10 28		6375' 1943m		6375' 1943m	151' 46m

	TAKE-OFF	FOR FILING AS ALTERNATE	
	All Rwy's	A	B
PROP 1 & 2 Eng	500-1	800-2	C
PROP 3 & 4 Eng	300-1		
ALL JET			



MMCM / CTM
CHETUMAL INTERNACIONAL AIRPORT

Arrivals

1. Upon arrival aircraft must follow ATC instructions to taxi into general aviation apron.
2. Passengers will disembark and walk into the main terminal to follow customs and immigration procedures; all bags, backpacks, handbags, briefcases must be taken inside the terminal to be subject to a review process by the customs and federal police authorities, the passengers must be with their luggage all the time.
3. When the passengers disembark the aircraft, one representative of customs, federal police and

agricultural authorities will embark the aircraft to check if there is no one of the passengers left or any luggage and food that cannot be introduced into Mexican territory.

Departures

1. Our agents will take the crew and passenger passports among with the luggage.
2. The luggage will be taken into the x ray machine for security purposes.
3. The whole process will take around 15-20 minutes.

