

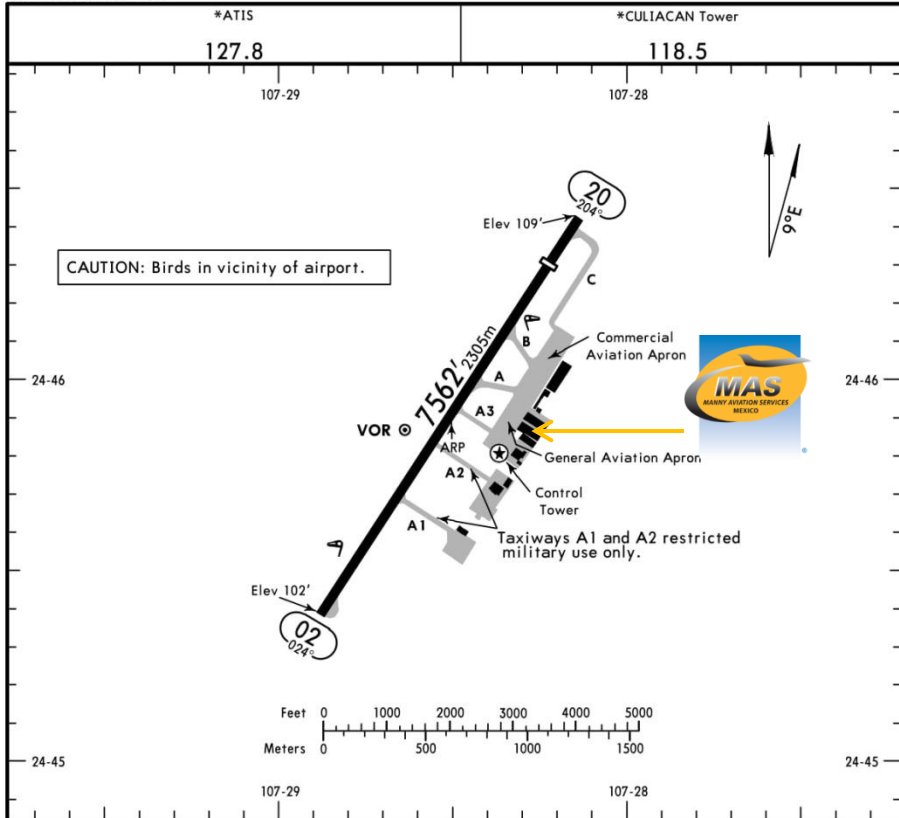


MMCL / CUL
CULIACAN INTERNACIONAL AIRPORT

MMCL/CUL
Apt Elev 108'
N24 45.9 W107 28.5

JEPPESEN
29 DEC 17 (10-9) Eff 4 Jan

CULIACAN, MEXICO
CULIACAN INTL



Address:

Carretera a Navolato Km 4.5,
Col. Bachigualato.
Telephone:+52 (722) 273 0981

Operational information:

Operational hours: Winter 1300/0500
UTC – Summer 1200/0400 UTC
Customs and immigration: During
operational hours.
Fuel available: Avgas 100/130, Jet A1
Fire Cat: VII

ADDITIONAL RUNWAY INFORMATION

RWY	USABLE LENGTHS	LANDING BEYOND		TAKE-OFF	WIDTH
		Threshold	Glide Slope		
02 20	HIRL (197') REIL PAPI-L (angle 3.0°)	7343' 2238m 6660' 2030m		7343' 2238m	148' 45m

TAKE-OFF & DEPARTURE PROCEDURE

	Rwy 20		Rwy 02		FOR FILING AS ALTERNATE
			NA Without 400' / NM rate of climb		
	DAY		NIGHT		
1 & 2 Eng	300-1	500-1	500-1		1000-2
3 & 4 Eng					

CHANGES: Runway length.

© JEPPESEN, 2000, 2017. ALL RIGHTS RESERVED.



MMCL / CUL
CULIACAN INTERNACIONAL AIRPORT

Arrivals

1. Upon arrival aircraft must follow ATC instructions to taxi into general aviation apron.
2. Passengers will disembark and walk into the main terminal to follow customs and immigration procedures; all bags, backpacks, handbags, briefcases must be taken inside the terminal to be subject to a review process by the customs and federal police authorities, the passengers must be with their luggage all the time.
3. When the passengers disembark the aircraft, one representative of customs, federal police and

agricultural authorities will embark the aircraft to check if there is no one of the passengers left or any luggage and food that cannot be introduced into Mexican territory.

Departures

1. Our agents will take the crew and passenger passports among with the luggage.
2. The luggage will be taken into the x ray machine for security purposes.
3. The whole process will take around 15-20 minutes.

