



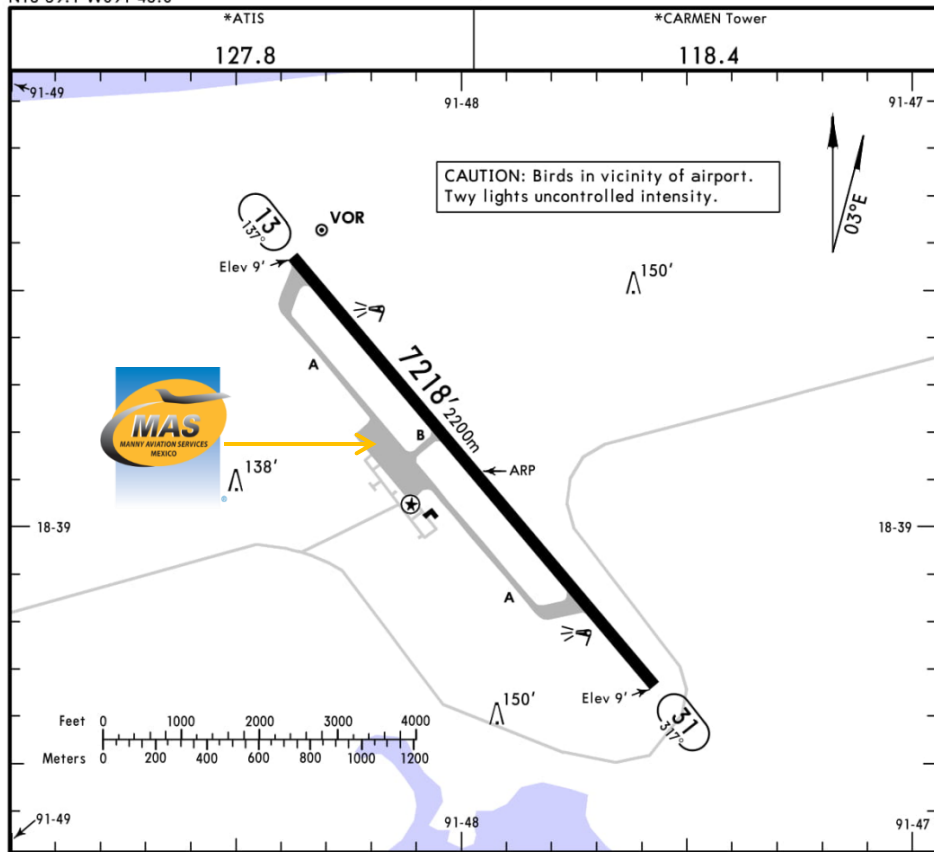
MMCE / CME
CIUDAD DEL CARMEN INTERNACIONAL AIRPORT

MMCE/CME

Apt Elev 10'
N18 39.1 W091 48.0

JEPPESEN CIUDAD DEL CARMEN, MEX

17 JUN 16 (10-9) Eff 23 Jun CIUDAD DEL CARMEN INTL



Address:

Calle 31 S/N
Ciudad del Carmen, Campeche
C.P. 24190
Telephone: +52(722) 273 0981

Operational information:

Operational hours: Winter 1300/0100
UTC / Summer 1200-0000 UTC
Customs and immigration: During
operational hours.
Fuel available: Avgas 100/130, Jet A1
Fire Cat: V

ADDITIONAL RUNWAY INFORMATION

RWY		USABLE LENGTHS			WIDTH
		LANDING BEYOND		TAKE-OFF	
		Threshold	Glide Slope		
13 31	HIRL PAPI-L (angle 3.0°)				148' 45m

TAKE-OFF & DEPARTURE PROCEDURE

FOR FILING AS ALTERNATE

	All Rwys		
1 & 2 Eng	200-1	A	800-2
3 & 4 Eng		B	
	C		
	D		

DEPARTURE PROCEDURE: For departures and
MCAs see Ciudad Del Carmen 10-3/10-3A.

CHANGES: Chart reindexed, rwy end elevations added.

© JEPPESEN, 1999, 2016. ALL RIGHTS RESERVED.

