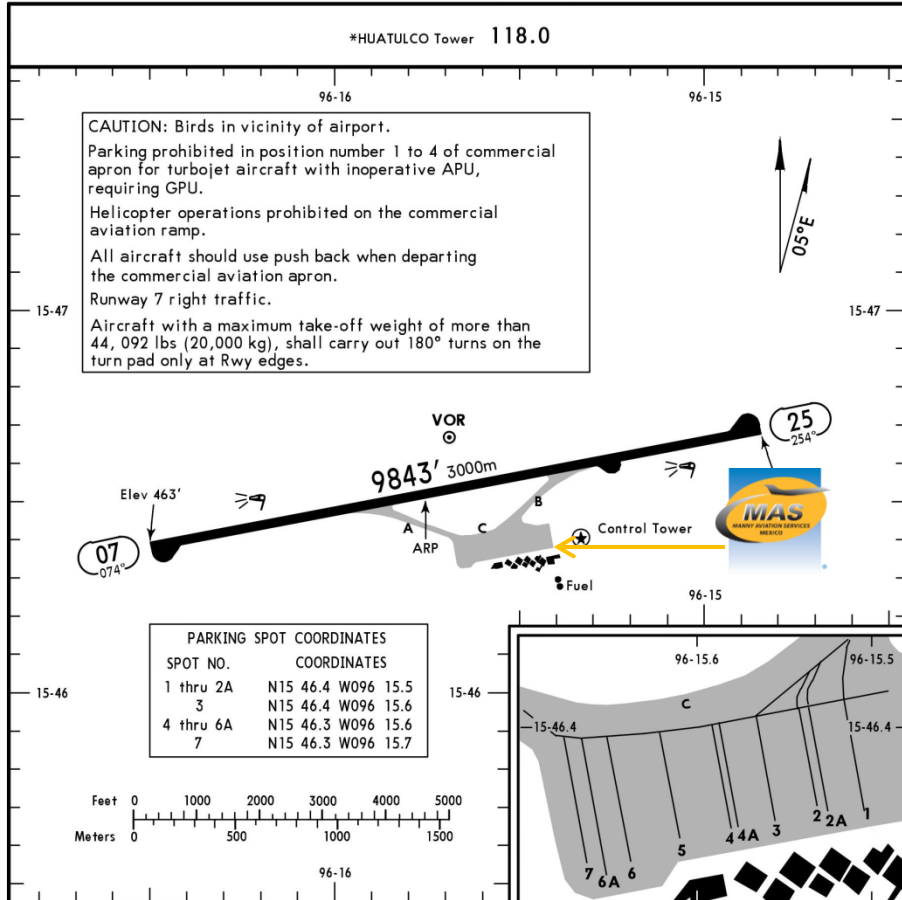




MMBT/HUX
BAHIAS DE HUATULCO INTERNATIONAL AIRPORT.

MMBT/HUX
Apt Elev 464'
N15 46.5 W096 15.8

JEPPESEN BAHIAS DE HUATULCO, MEXICO
7 OCT 16 (10-9) Eff 13 Oct BAHIAS DE HUATULCO INTL



Address:

Carretera Costera Salina Cruz Km 237
El Zapote-Santa Maria Huatulco, Oaxaca
C.P. 70980
Telephone. +52 (722) 273 0981

Operational information:

Operational hours: Winter 1200-2300 UTC
/ Summer 1200-2300 UTC
Customs and immigration: During the hour of operation of the airport.
Fuel available: Jet A1
Fire Cat: VII

ADDITIONAL RUNWAY INFORMATION

RWY	USABLE LENGTHS	LANDING BEYOND		TAKE-OFF	WIDTH
		Threshold	Glide Slope		
07 25	HIRL REIL PAPI-L (angle 3.0°)				148' 45m

	TAKE-OFF		FOR FILING AS ALTERNATE	
	Rwy 25	Rwy 07	A	1500-3
1 & 2 Eng	300-1/2	500-1/2	B	
3 & 4 Eng			C	
	D			

CHANGES: Parking positions added, notes, reindexed.

© JEPPESEN, 2003, 2016. ALL RIGHTS RESERVED.



MMBT/HUX
BAHIAS DE HUATULCO INTERNATIONAL AIRPORT.

Arrivals

1. Upon arrival aircraft must follow ATC instructions to taxi into general aviation apron.
2. Crew and passengers passports will be given to one of our agents.
3. When the passengers disembark the aircraft, one representative of customs, federal police and agricultural authorities will embark the aircraft to check if there is none of the passengers left or any luggage and food that cannot be introduced into Mexican territory.
4. Passengers will disembark and walk into the general aviation terminal to follow customs and immigration procedures; all bags, backpacks, handbags,

briefcases must be taken inside the terminal to be subject to a review process by the customs authorities, the passengers must be with their luggage all the time. The passports will be taken to the immigration office to complete the arrival process.

5. The whole process will take around 15-20 minutes.

Departures

1. Our agents will take the crew and passenger passports among with the luggage.
2. The luggage will be taken into the x ray machine for security purposes.
3. The whole process will take around 15-20 minutes.

